



# RevoDrive 3

*BOOTABLE PCIe SOLID STATE DRIVE*

A large, white, stylized letter 'R' is positioned on the left side of the page, extending from the top to the bottom. The 'R' is partially cut off on the left edge. The background is dark grey at the top and transitions to a teal color at the bottom.

RevoDrive 3 PCIe SSD Series  
Installation & Quick Start Guide

# OCZ RevoDrive 3 PCIe SSD Series Installation & Quick Start Guide

## Welcome!

The OCZ RevoDrive 3 renders an SSD experience second to none. This next generation PCI-Express solid state drive series was designed with power users and multimedia designers in mind and gives enthusiasts the cutting-edge storage they crave. Along with unprecedented performance (Up to 3X faster than SATA III 6 Gb/s), the Revo3 features OCZ's proprietary *Virtualized Controller Architecture* (VCA) 2.0 which provides features including TRIM support and SMART data monitoring, something previously unheard of with PCIe solutions. In addition, the Revo3's *SuperScale* storage accelerator enables scalable SSD performance and significantly reduces the host CPU burden inherent to competing PCIe storage offerings.

At OCZ we have one primary goal, and it is to make sure that every customer is 100% satisfied. If you should have any questions during or after the installation process, please contact our industry-leading support department:

**Phone:** 1 (800) 459-1816  
**Online:** [www.ocztechnology.com/NewTicket.html](http://www.ocztechnology.com/NewTicket.html)  
**24 Hour Support:** [www.ocztechnologyforum.com](http://www.ocztechnologyforum.com)

**The following instructions are a general guideline for installation and should act as a complement to your system's user manual.**

## Download Driver

1. Drivers for the RevoDrive 3 are available online at <http://www.ocztechnology.com/drivers>.  
Alternatively, you can also find the "Drivers" under our "Downloads" section on our homepage.
2. Select RevoDrive 3 from the list of products.
3. Now determine which driver is required for your system (e.g. Windows 7™ 32-bit or 64-bit driver).



**NOTE: If you are unsure, right click your "My Computer" icon and select "Properties" (See Figure 1). The dialogue box that opens will contain information regarding the version of the operating system installed on your computer (See Figure 2).**

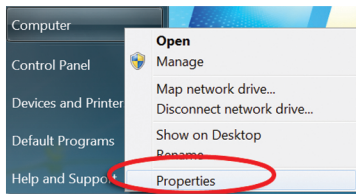


Figure 1: System Properties

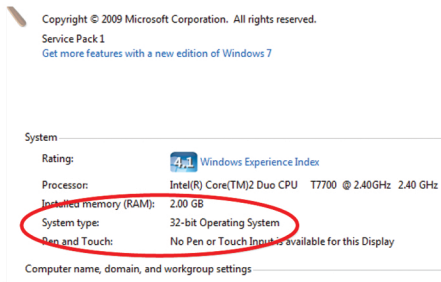


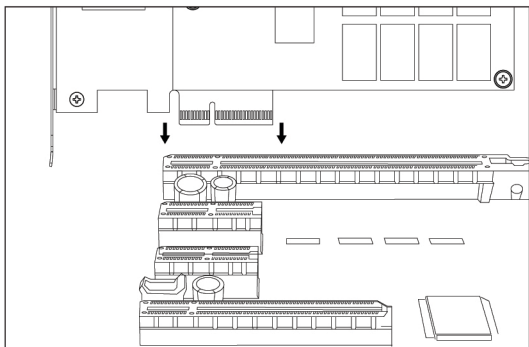
Figure 2: Windows™ System Information

4. Download the driver appropriate to your system. Unzip the required driver onto a CD or a USB key to be used later during the installation.

## Hardware Installation


**NOTE:** For optimal performance, please ensure that your target PCIe slot is v2.0. Refer to your system manual for further details.

1. Locate an available x4, x8 or x16 PCI-Express slot and carefully seat the drive into the slot (See Figure 3).



**Figure 3: Example of a PCIe Slot**

2. Make certain that the drive board seats firmly into the slot. Screw the top of the board bracket into the system to ensure it remains in place.

 **Warning!** The RevoDrive 3 PCIe SSD offers you the option to utilize the drive as either a primary boot drive for your operating system or as storage device. Users should choose one of the following usages below:

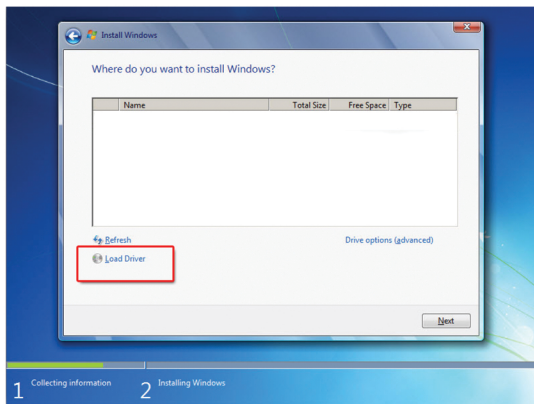
## Usage 1: Installation as a Boot Device

### Installing Windows on RevoDrive 3

1. Follow the “Download Driver” section of this manual to prepare a driver for installation.
2. Make sure the boot order in the system BIOS is set to boot from the Windows™ installation CD in the CD drive.

 **NOTE:** Please consult your system’s user manual for further detailed instructions on how to access your BIOS and modify its settings.

3. After booting from the CD, follow the onscreen installation instructions from Windows™.
4. Under the screen, “Where do you want to install Windows™?” select the “Load Driver” button and load the driver from the CD or USB key that you created in the “Download Driver” section (See Figure 4).



**Figure 4: Example of Windows 7™ Installation Screen**



**NOTE: The RevoDrive 3 WILL NOT be shown as an option unless the proper driver is loaded.**

5. Load the driver and the RevoDrive 3 should now appear. Select the drive to continue the installation as prompted.
6. After the installation is complete, follow “*Setting the RevoDrive 3 as a Boot Device*” below.

### Setting the RevoDrive 3 as a Boot Device

1. To set the RevoDrive 3 as a boot device, you must first change the boot order in the motherboard BIOS.



**NOTE: Please consult your system’s user manual for further detailed instructions on how to access your BIOS and modify its settings.**

2. Change the RevoDrive 3 to the primary boot device.
3. Save your settings and exit the BIOS.
4. Your RevoDrive 3 should now be your boot device.
5. Sit back and enjoy your new RevoDrive 3!



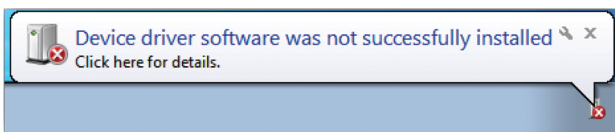
**NOTE: DO NOT follow the “*Formatting Revo 3*” section if installing as a boot device.**

## Usage 2: Installation as a Supplementary Storage Drive

### Using the RevoDrive 3 as a Storage Drive

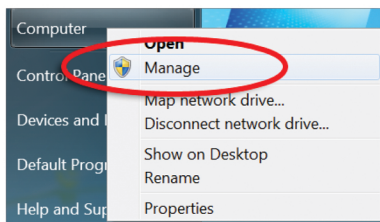
The RevoDrive 3 can become a storage drive in a computer with an existing Windows installation.

1. Follow the *“Hardware Installation”* section to install the card into the computer.
2. Turn on the computer and boot to Windows™.
3. Your computer must be connected to the internet for Windows™ to automatically locate and install the RevoDrive 3 driver.
4. If the driver was successfully located and installed, **skip to step 12**.
5. If the Windows™ prompt states that the *“Device driver software was not successfully installed”* (See Figure 5), you must install the driver manually.



**Figure 5: If you see this prompt, you must install the driver manually**

6. Follow the *“Download Driver”* section of this manual to prepare a driver for installation.
7. Insert the CD or the USB key you prepared in the *“Download Driver”* section into the computer.
8. Click on the Windows™ Start button, right click *“Computer”* and select *“Manage”* (See Figure 6).



**Figure 6: Select Manage Option**

9. In "Computer Management" window, select "System Tools" and click on "Device Manager" on the left menu. (See Figure 7)

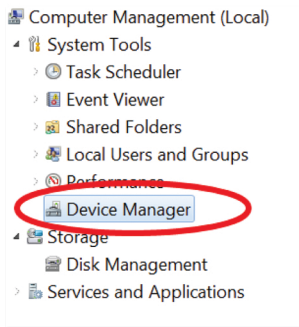


Figure 7: Device Manager Window

10. In the right hand menu, select "Other devices" and right click "SCSI Controller" and select "Update Driver Software" (See Figure 8).

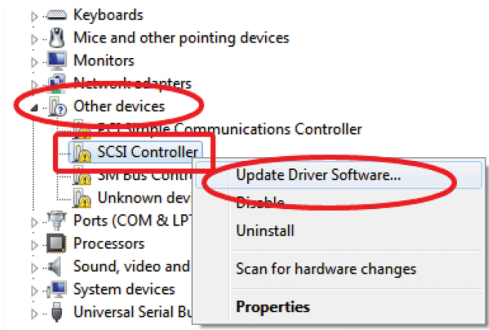


Figure 8: Select Update Drive Software

11. Select “Browse my computer for driver software” (See Figure 9).

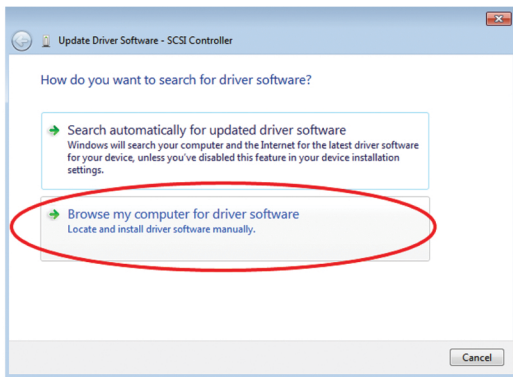


Figure 9: Update Driver Software Screen

12. Click the “Browse” button, find and select the location of the RevoDrive 3 driver (See Figure 10).  
Click the “Next” button to install the driver.

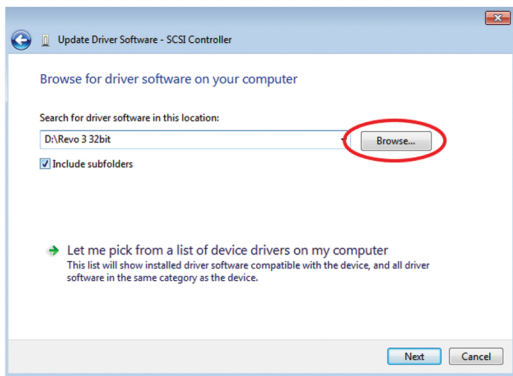


Figure 10: Update Driver Software Screen

13. Follow “Formatting the RevoDrive 3” section below.



## Formatting RevoDrive 3 (Windows)

1. Click on the Windows™ Start button, right click “Computer” and select “Manage”. (See Figure 11)

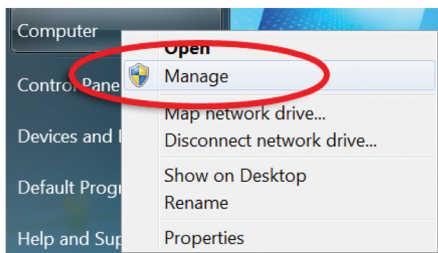


Figure 11: Select Manage Option

2. In “Computer Management” window, select “Storage” and click on “Disk Management” on the left menu. Wait for the “Initialize Disk” window to load and click “OK”. (See Figure 12)



**NOTE: If the RevoDrive 3 is already initialized, then this step can be skipped.**

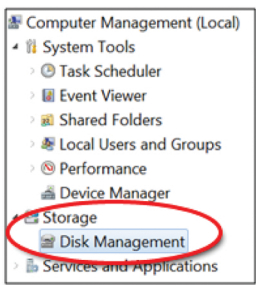


Figure 12 Disk Management Window

3. After the disks initialize, right click on the graphical bar representing the unallocated disks and select “New Simple Volume” to format the drive.
4. Follow the onscreen instructions to finish formatting the drive.
5. Sit back and enjoy your new RevoDrive 3!

## **LIMITED WARRANTY**

OCZ Technology products epitomize the new vanguard of quality standards as part of our commitment to our customers. All OCZ Technology Group ("OCZ") products are warranted and tested to be free from defects in material and workmanship and to conform to the published specifications. Should your OCZ product fail within the warranty period (under normal use in the recommended environment) due to improper workmanship or materials, OCZ will repair the product or replace it with a comparable or better unit. This warranty is subject to the conditions and limitations set forth herein.

## **DURATION OF WARRANTY**

The OCZ Revodrive 3 is covered by this warranty for 3 years from the date-of-purchase. Proof-of-purchase including the date-of-purchase is required to collect on the warranty. OCZ will inspect the product and decide whether to repair or replace it. OCZ reserves the right to provide a functional equivalent product, or a refurbished replacement product.

## **LIMITATIONS**

This warranty does not apply to product failure caused by accidents, abuse, mishandling, improper installation, alteration, acts of nature, improper usage, or problems with electrical power. In addition, opening or tampering with the product casing, or any physical damage, abuse or alteration to the product's surface, including all warranty or quality stickers, product serial or electronic numbers will also void the product warranty. OCZ is not responsible for recovering any data lost due to the failure of a Flash memory device. OCZ products must be used with devices that conform to the recommended industry standards. OCZ will not be liable for damages resulting from a third party device that causes the OCZ product to fail. OCZ shall in no event be liable for any consequential, indirect, or incidental damages, lost profits, lost business investments, lost goodwill, or interference with business relationships as a result of lost data. OCZ is also not responsible for damage or failure of any third-party equipment, even if OCZ has been advised of the possibility. This limitation does not apply to the extent making it illegal or unenforceable under applicable law.

Windows™ is a registered trademark of Microsoft Corporation in the United States and other countries.



[ocztechnology.com](http://ocztechnology.com)