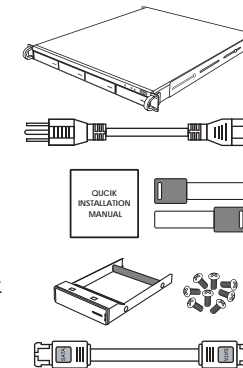




Package Contents

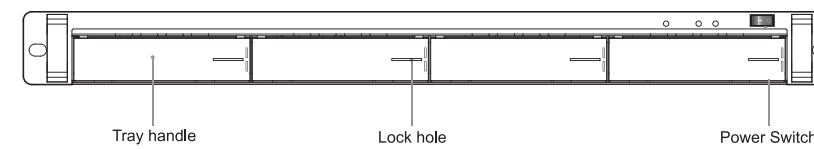
ESI04T+(B)	1
Power Cord	1
Manual	1
Hard Drive Tray Key	1
Removable Tray Modules (Screws Included)	4
Screws	1 pack
eSATA Cable	4

(Please contact Sans Digital in case of missing or damaged items)

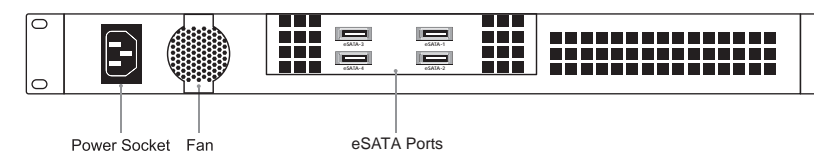


Hardware Diagrams

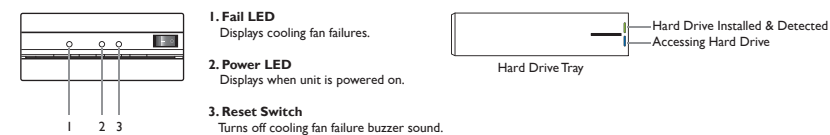
Front



Back



LED Indicators

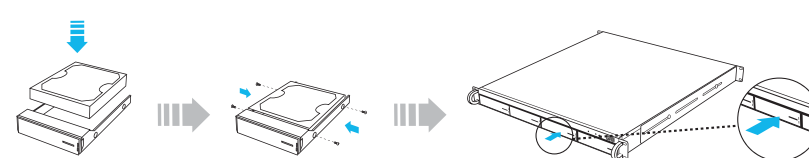


Installing a Hard Drive in the Removable Tray

1. Press the key (included in the package) into the lock slot located at the front of the hard drive tray until the tray handle unlocks.
2. Pull on the tray handle to remove the tray from the enclosure.
3. Dismount the plastic tray protector rods by removing the screws on the sides of the tray.



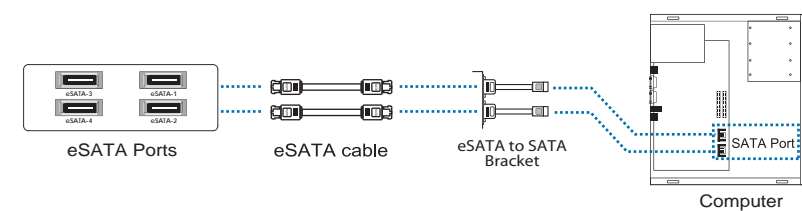
4. Place the hard drive in the tray, and fasten it with the screws (included in the package) in corresponding locations.
5. Place the tray back into the enclosure and lock the tray by pushing in the tray handle.



Connecting the ESI04T+(B) to the Computer

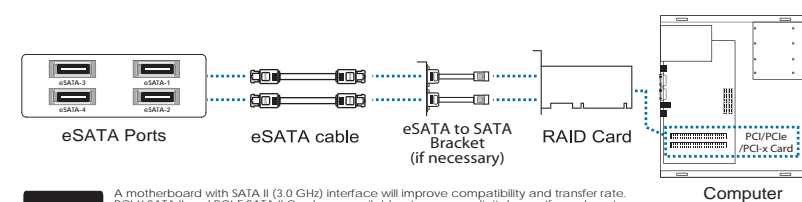
A. Using on Board SATA Connector

Connect one end of the eSATA bracket-to-SATA cable to the SATA interface on the motherboard of your computer and connect the other end to the SATA port on the back of the unit. Make sure the screws on the eSATA to SATA bracket are fastened and the eSATA connector is secure as illustrated below. After ensuring the device was installed successfully, power on the unit, and then power on the PC.



B. RAID Controller Card Mode

Install the RAID controller card into the PCI slot on your PC. Connect one end of the eSATA on the RAID controller card (use eSATA to SATA bracket if necessary) and connect the other end to the eSATA port on the unit. Make sure the screws on the bracket are fastened and the eSATA connector is secure as illustrated below. After ensuring the unit was installed successfully, power on the unit, and then power on the PC. (To set the RAID level on the RAID controller card, please refer to the RAID controller card user's manual.)



NOTE: A motherboard with SATA II (3.0 GHz) interface will improve compatibility and transfer rate. PCI-X SATA II and PCI-E SATA II Cards are available at www.sansdigital.com. If you do not have a SATA II interface on your motherboard for high speed data transfer. Please only use Sans Digital eSATA cables and SATA bracket included for installation.